



# THE STATE OF GEORGIA

## EXECUTIVE ORDER

---

BY THE GOVERNOR:

**WHEREAS:** There currently exist at the University of Georgia, College of Agriculture and Environmental Sciences, forty-two improvements across the State of Georgia (Exhibits 1 and 2), (the "buildings"); and

**WHEREAS:** The Board of Regents' Policy 9.9.3.3 DEMOLITION authorizes the Chancellor or Vice Chancellor for Facilities to declare buildings, structures and other improvements no longer advantageously useful to the University System of Georgia. Said buildings are included within this policy; and

**WHEREAS:** It has been determined by Mr. Jim James, Vice Chancellor for Facilities of the Board of Regents of the University System of Georgia, that said buildings can no longer be advantageously used by the University of Georgia or the University System of Georgia and should be demolished and removed.

**NOW, THEREFORE, BY THE POWER VESTED IN ME AS GOVERNOR OF THE STATE OF GEORGIA, IT IS HEREBY**

**ORDERED:** That the Board of Regents of the University System of Georgia is hereby authorized to demolish and remove said buildings from the University of Georgia, College of Agriculture and Environmental Sciences locations as described in Exhibit 1.

**IT IS FURTHER**

**ORDERED:** That the appropriate staff of the University of Georgia, Clarke County, Athens, Georgia, acting under the approval of the Board of Regents of the University System of Georgia, is hereby authorized to demolish said buildings and to have all building materials removed from the premises; all said demolition and removal to be performed as expeditiously as possible.

This 3 day of December, 2014.

*Nathan Deal*

GOVERNOR

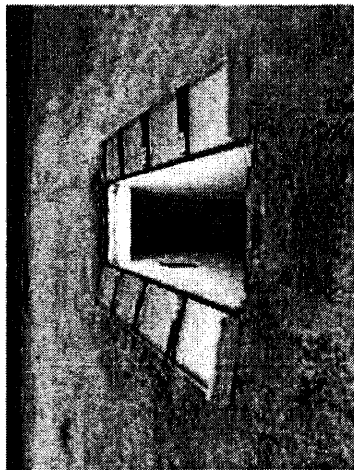
EXHIBIT 1

<u>Building Number</u>	<u>Building Name</u>	<u>Location</u>	<u>City</u>	<u>Zip Code</u>	<u>County</u>
2417	RHIZOTRON BUILDING	RIVERBEND ROAD	Athens	30605	Clarke
3049	HORT EQUIP STG	HORTICULTURE FARM COLLEGE STA	Watkinsville	30677	Oconee
3057	PREFAB STRG BLDG 1	HORTICULTURE FARM COLLEGE STA	Watkinsville	30677	Oconee
3074	HORT IRRIG SYS	HORTICULTURE FARM COLLEGE STA	Watkinsville	30677	Oconee
3526	SWINE DEMONSTRATN	GA MOUNTAIN R&E CTR, BLAIRSVILLE	Blairsville	30512	Union
3530	GREENHOUSE-GLASS	GA MOUNTAIN R&E CTR, BLAIRSVILLE	Blairsville	30512	Union
3531	GREENHOUSE-PLASTIC	GA MOUNTAIN R&E CTR, BLAIRSVILLE	Blairsville	30512	Union
3533	SWINE FINISH DEMON	GA MOUNTAIN R&E CTR, BLAIRSVILLE	Blairsville	30512	Union
3611	CATTLE FEED BARN	NW GA R&E CTR - ANIMAL SCI FARM	Rome	30161	Floyd
3673	REDBUD STORAGE BAR	NW GA R&E CENTER - REDBUD FARM	Resaca	30735	Gordon
3745	TH POLE BARN 2	CENTRAL GA R&E CTR, EATONTON	Eatonton	31024	Putnam
3751	GLDS CORRAL/ SCALE	CENTRAL GA R&E CTR, EATONTON	Eatonton	31024	Putnam
3754	HQ - 24 FT STG BIN	CENTRAL GA R&E CTR, EATONTON	Eatonton	31024	Putnam
3759	BNX QUONSET HUT	CENTRAL GA R&E CTR, EATONTON	Eatonton	31024	Morgan
3794	HQ ERICS POLE BARN	CENTRAL GA R&E CTR, EATONTON	Eatonton	31024	Putnam
3878	TH CORRAL	CENTRAL GA R&E CTR, EATONTON	Eatonton	31024	Putnam
3879	BNX CORRAL	CENTRAL GA R&E CTR, EATONTON	Eatonton	31024	Putnam
3881	RCH CORRAL	CENTRAL GA R&E CTR, EATONTON	Eatonton	31024	Putnam
4378	ENT GREENHOUSE 3	MAIN CAMPUS - UGA AT GRIFFIN	Griffin	30223	Spalding
4390	BENT GRASS TOOL SD	MAIN CAMPUS - UGA AT GRIFFIN	Griffin	30223	Spalding
4391	BENT GRASS PUMPHS	MAIN CAMPUS - UGA AT GRIFFIN	Griffin	30223	Spalding
4392	ENT GREENHOUSE 2	MAIN CAMPUS - UGA AT GRIFFIN	Griffin	30223	Spalding
4395	ENT GREENHOUSE 1	MAIN CAMPUS - UGA AT GRIFFIN	Griffin	30223	Spalding
4399	PATHOLOGY POLY GH	MAIN CAMPUS - UGA AT GRIFFIN	Griffin	30223	Spalding
4452	DEMPSEY POLE BARN	DEMPSEY FARM GA STATION	Griffin	30223	Spalding
4460	CANOLA SUPPORT BLD	MAIN CAMPUS - UGA AT GRIFFIN	Griffin	30223	Spalding
4480	TURF EQUIP SHOP	MAIN CAMPUS - UGA AT GRIFFIN	Griffin	30223	Spalding
4487	ENT SUPPORT BLDG	MAIN CAMPUS - UGA AT GRIFFIN	Griffin	30223	Spalding
4507	BLED SOE EQUIP BLD	BLED SOE FARM (PIKE CO) GA STAT	Williamson	30292	Pike
4509	PIKE SILO #9	BLED SOE FARM (PIKE CO) GA STAT	Williamson	30292	Pike

EXHIBIT 1

<u>Building Number</u>	<u>Building Name</u>	<u>Location</u>	<u>City</u>	<u>Zip Code</u>	<u>County</u>
4510	PIKE SILO #10	BLEDSOE FARM (PIKE CO) GA STAT	Williamson	30292	Pike
4732	SWINE RESEARCH	MAIN CAMPUS - UGA AT TIFTON	Tifton	31794	Tift
4744	LAYER HOUSE(ENT.)	MAIN CAMPUS - UGA AT TIFTON	Tifton	31794	Tift
4746	HAY SHED	MAIN CAMPUS - UGA AT TIFTON	Tifton	31794	Tift
4756	BOAR TESTING	MAIN CAMPUS - UGA AT TIFTON	Tifton	31794	Tift
4759	SWINE BREED/GEST	MAIN CAMPUS - UGA AT TIFTON	Tifton	31793	Tift
4780	GIBBS FRM:MTL SHD	GIBBS FARM - UGA AT TIFTON	Tifton	31794	Tift
4795	AS ENTO CHICK HSE	MAIN CAMPUS - UGA AT TIFTON	Tifton	31794	Tift
4799	INCINERATOR BLDG	MAIN CAMPUS - UGA AT TIFTON	Tifton	31794	Tift
4831	ALAPAHA: HAY SHED	RANGE GRAZING ST - UGA AT TIFTON	Alapaha	31622	Berrien
4832	ALAPAHA: TOOL STRG	RANGE GRAZING ST - UGA AT TIFTON	Alapaha	31622	Berrien
4864	GREENHSE ATTAPULGU	ATTAPULGUS RESEARCH FARM	Attapulgu	31715	Decatur

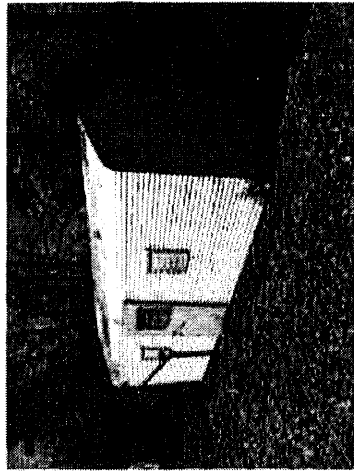
EXHIBIT 2



2417 RHIZOTRON BUILDING



3049 HORT EQUIP STG



3057 PREFAB STRG BLDG 1



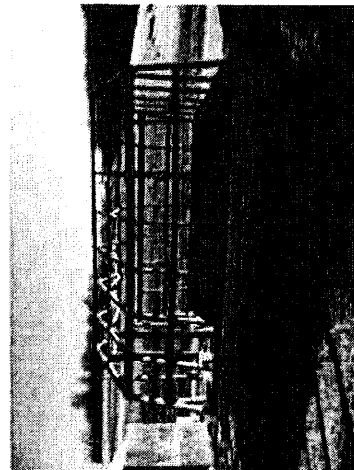
3074 HORT IRRIG SYS



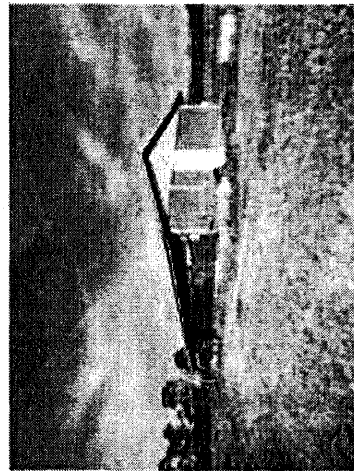
3526 SWINE DEMONSTRATN



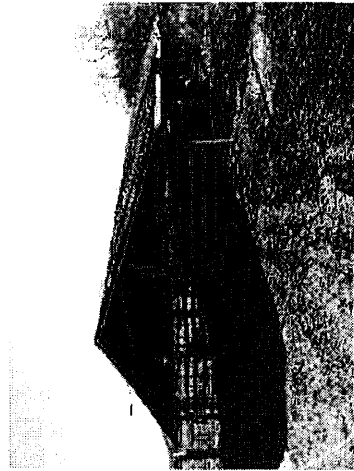
3530 GREENHOUSE-GLASS



3531 GREENHOUSE-PLASTIC



3533 SWINE FINISH DEMON

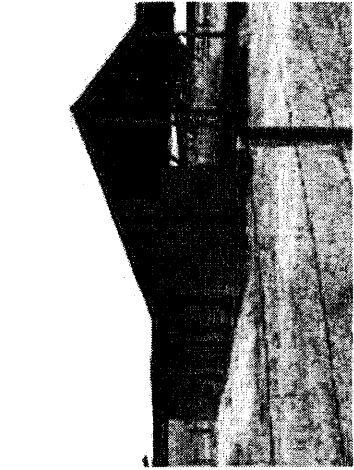


3611 CATTLE FEED BARN

EXHIBIT 2



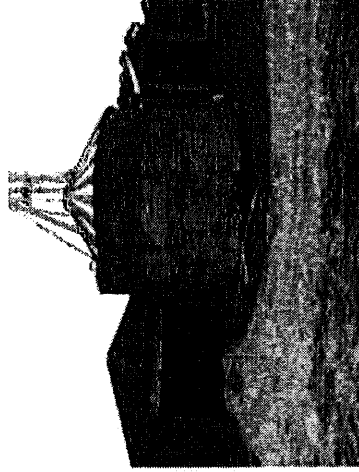
3673 REDBUD STORAGE BAR



3745 TH POLE BARN 2



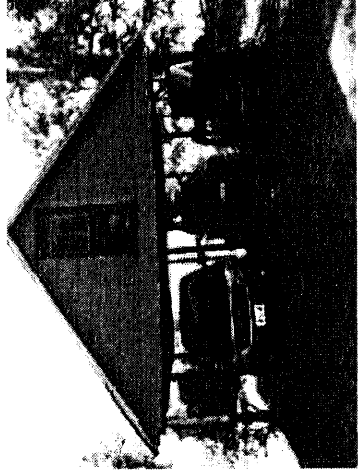
3751 GLDS CORRAL/ SCALE



3754 HQ - 24 FT STG BIN



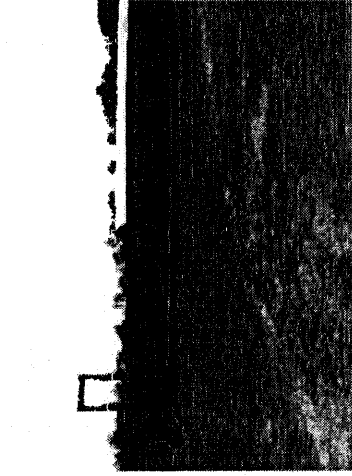
3759 BNX QUONSET HUT



3794 HQ ERICS POLE BARN



3878 TH CORRAL

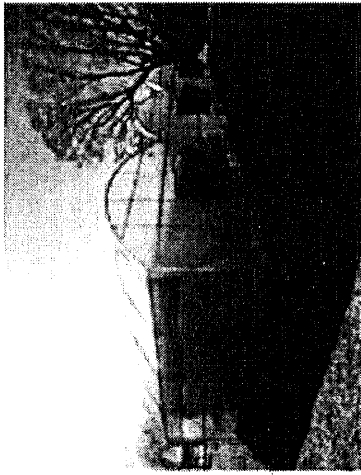


3879 BNX CORRAL

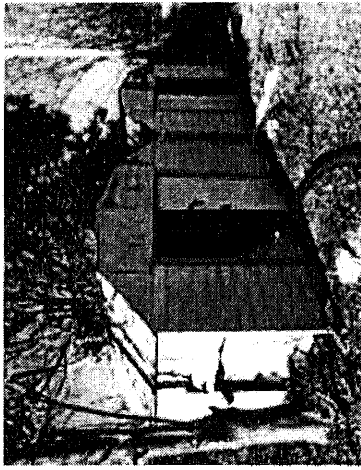


3881 RCH CORRAL

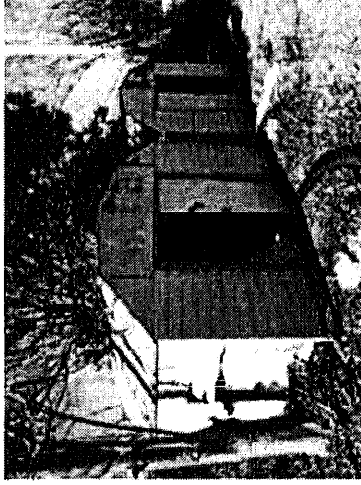
EXHIBIT 2



4378 ENT GREENHOUSE 3



4390 BENT GRASS TOOL SD



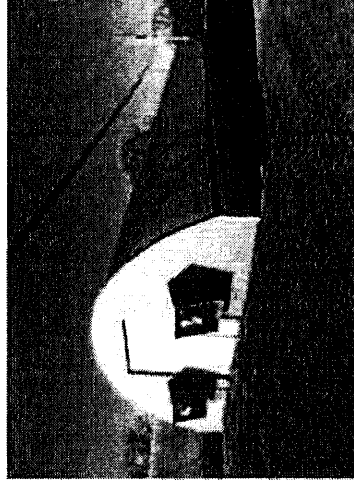
4391 BENT GRASS PUMPHS



4392 ENT GREENHOUSE 2



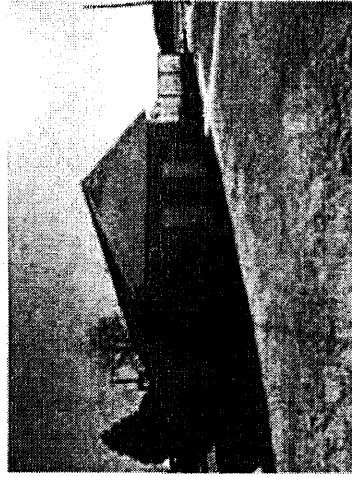
4395 ENT GREENHOUSE 1



4399 PATHOLOGY POLY GH



4452 DEMPSEY POLE BARN

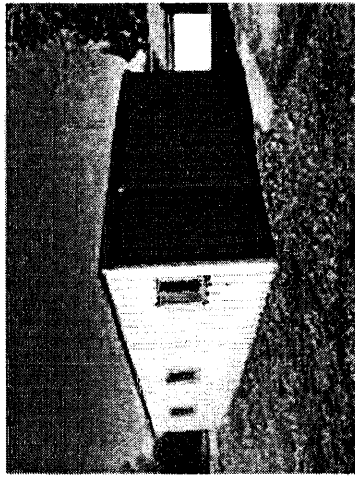


4460 CANOLA SUPPORT BLD



4480 TURF EQUIP SHOP

EXHIBIT 2



4487 ENT SUPPORT BLDG



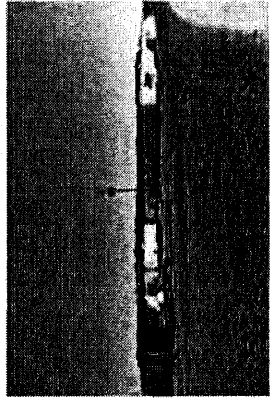
4507 BLEDSOE EQUIP BLD



4509 PIKE SILO #9



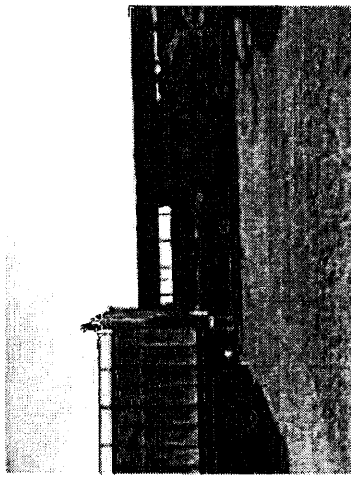
4510 PIKE SILO #10



4732 SWINE RESEARCH



4744 LAYER HOUSE(ENT.)



4746 HAY SHED



4756 BOAR TESTING

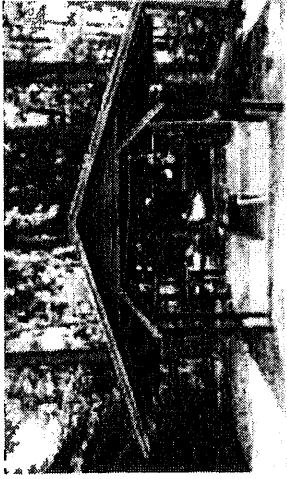


4759 SWINE BREED/GEST

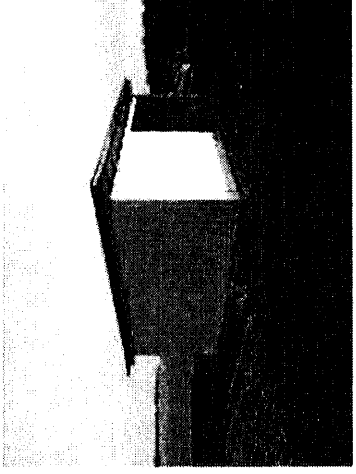
EXHIBIT 2



4780 GIBBS FRM:MTL SHD



4795 AS ENTO CHICK HSE



4799 INCINERATOR BLDG



4831 ALAPAHA: HAY SHED



4832 ALAPAHA: TOOL STRG



4864 GREENHSE ATTAPULGU